

# Wireless Touchless Switch (WPS100)

## Instruction Manual

The WPS100 is a wireless proximity switch that is easy to install. It can control the opening and closing of automatic doors and similar devices by detecting hand or object movement without direct contact. For the safe and correct use of the product, please read this instruction manual carefully.

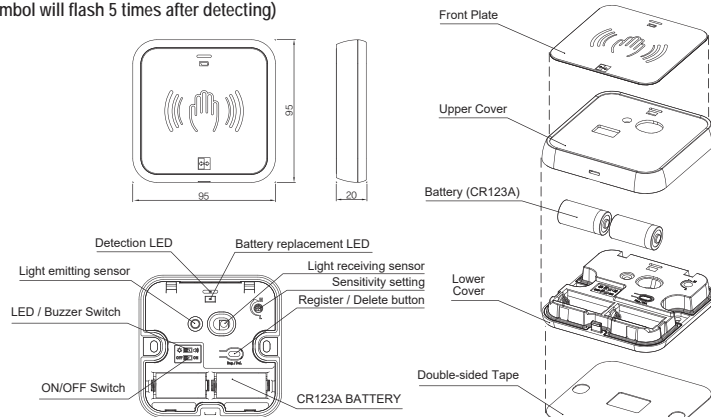


## 1 Product composition and specification

Components	Quantity	Notes
WPS100	1EA	
Double-sided Tape	1EA	
Battery (CR123A)	2EA	
Fixing Screw (4*16)	2EA	
Front Plate (2 types)	2EA (Hand and Wheelchair)	
User Manual	1Copy	
Specifications		
Power Supply	DC3V	
Technology	Infrared - Reflective	
Detection Range / Method	1~15cm ±5cm / LED or BUZZER	
Detecting Target	Hand or Object (Touchless) ※ Detecting distance varies depending on the color of the object	
Output	2.4GHz	
Transmitting distance	<10m (2m or less when attached a metal structure)	
Reaction sensitivity	<1sec.	
Battery Lifespan	Approx. 12 months (500 usages per day)	
Current Consumption	<0.5mWh	
Operating Temp / Humidity	-20°C ~ 50°C / 0~90%	
International Protection	IP65	
Product size / weight	95 x 95 x 20 mm	

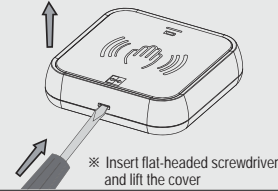
## 2 General Information

- LED Red : Detecting
- LED Red : Replace battery  
(Battery symbol will flash 5 times after detecting)

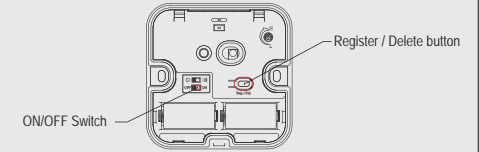


## 3 Installation Guide

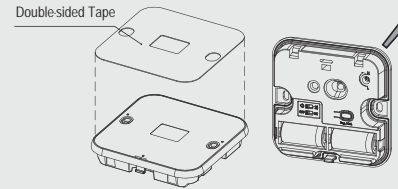
- If the protective film is not removed from the Front Plate it may interfere with the function of this product, therefore remove the protective film from the Front Plate and disassemble the WPS100 cover using a screwdriver.



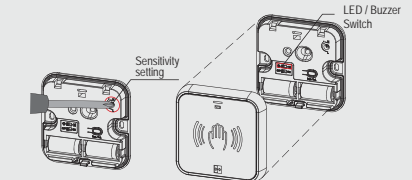
- Install batteries and turn the WPS100 ON. Register the transmitter using the Register/Delete button (See section 4).



- Attach the Lower Cover to where you want to install the sensor using the Double-sided Tape and/or screws provided.

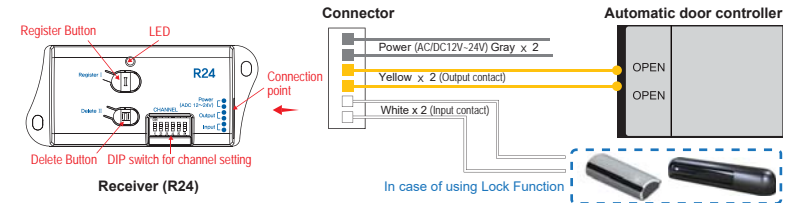


- Set the detection distance as required by adjusting the Sensitivity setting using a screwdriver. Select whether you want detection to be indicated with an LED or a Buzzer, then attach the Upper Cover to the sensor.



## 4 Registering the WPS100 transmitter with the R24 receiver

※ Up to 10 AerWave can be registered with one WR-24 receiver.



※ Make sure to check that all dip switches are in the down (OFF) position before proceeding

### 1. How to register an WPS100 Transmitter

- Connect power to the WR-24 receiver.
- Press the Register/Delete button on the AerWave switch for 3 seconds whilst simultaneously pressing the Register I button on the WR-24 receiver.
- The red LED will flash on the WR-24 to indicate registration.

### 2. How to delete an WPS100 Transmitter

- Connect power to the WR-24 receiver.
- Press the Register/Delete button on the AerWave switch for 3 seconds whilst simultaneously pressing the Delete II button on the WR-24 receiver.
- The blue LED will flash on the WR-24 to indicate deletion.

### 3. How to delete all registered WPS100 transmitters

- Press the Register I button and Delete II button on the WR-24 receiver at the same time for 5 seconds.
- The blue LED will flash three times indicating that all registered AerWave transmitters have been deleted.



## 5 Precautions

- Remove the protective film attached to the front plate
- Do not install in places exposed to strong sunlight
- Avoid moving objects in front of the sensor
- Do not install in humid areas

